

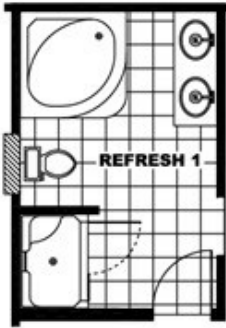


The "MoonShiner"

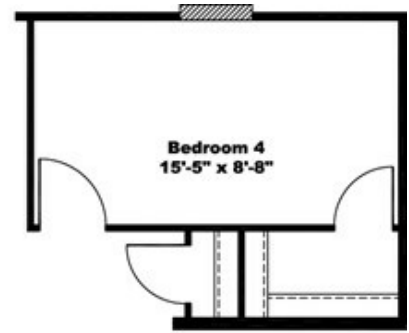


The "MoonShiner" Floor plan number: SGI016342TNAB

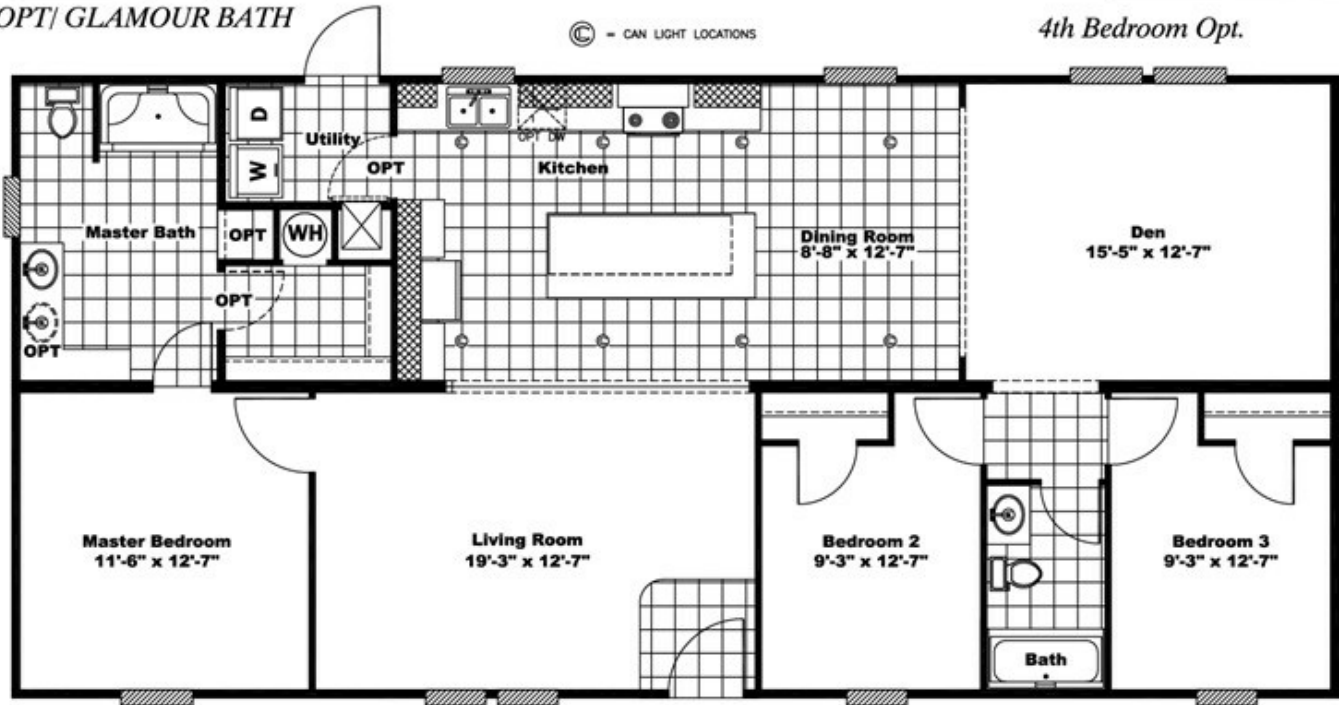
3 beds • 2 baths • 1568 sq.ft. • 28' width • 56' depth



OPT| GLAMOUR BATH



4th Bedroom Opt.



Our home building facilities invest in continuous product and process improvements. Plans, dimensions, features, materials, specifications and availability are subject to change without notice or obligation. Renderings and floor plans are representative likenesses of our homes and may differ from the actual homes. We invite you to tour a Home Center near you and inspect the highest value in quality housing available or call (865) 933-3333 to speak with a Home Consultant. Copyright 2017, CMH. All rights reserved.

CLAYTON HOMES-KODAK

3110 WINFIELD DUNN PARKWAY HWY
66
KODAK, TN 37764

Monday - Thursday: 9am - 7pm
Friday: 9am - 6pm
Saturday: 9am - 5pm
Sunday: Closed

(865) 933-3333